



Lot 2
955 EBENEZER LANE
Single-family

5,801± square feet
5 bedrooms
5.5 bathrooms

Matt Schwartzhoff
m. 678.591.6902 o. 770.442.7300
mschwartzhoff@atlantafinehomes.com

8000 Avalon Boulevard, Suite 800
Alpharetta, Georgia 30009

Atlanta Fine Homes | Sotheby's
INTERNATIONAL REALTY
DEVELOPER SERVICES

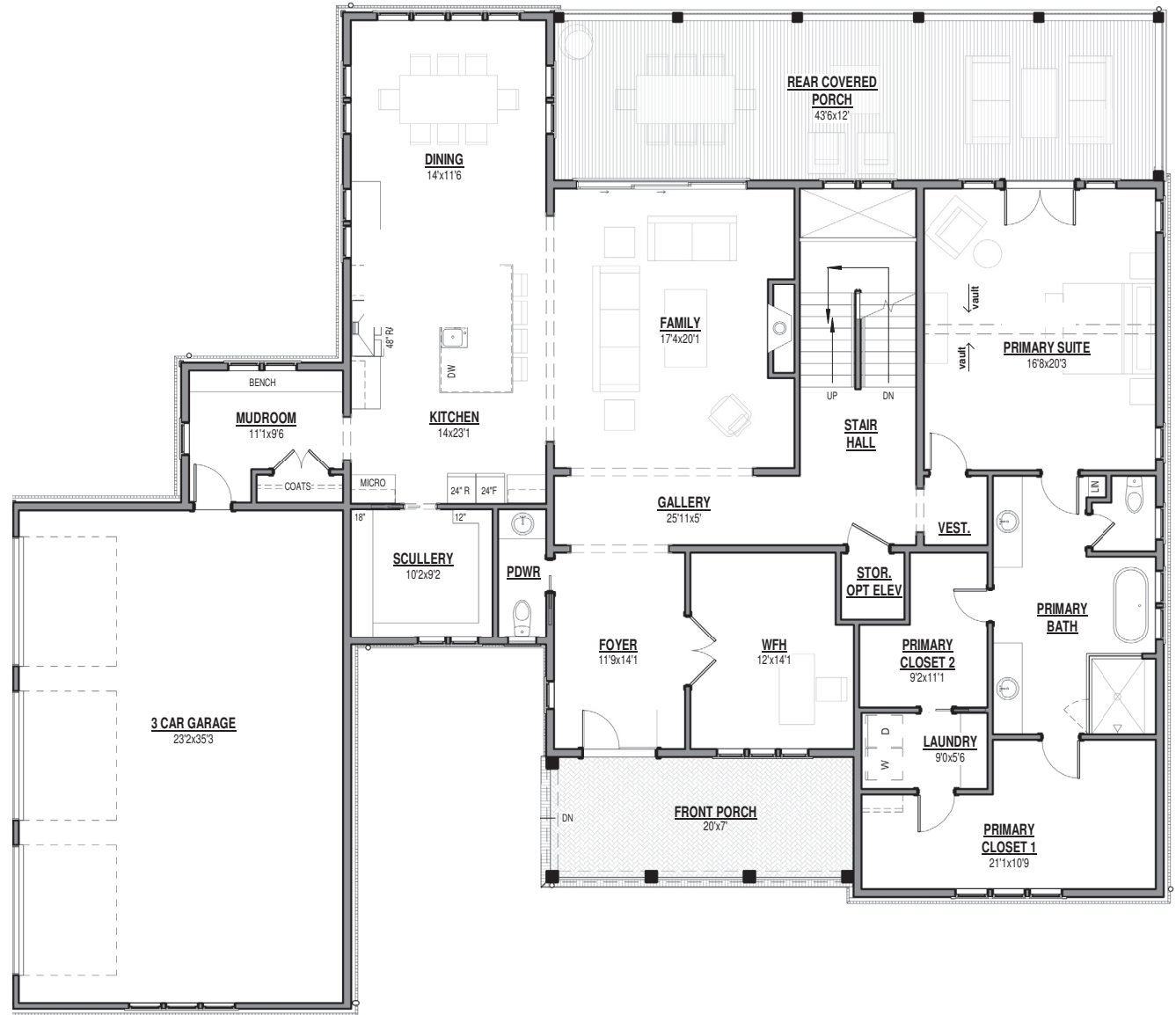


Sotheby's International Realty® and the Sotheby's International Realty Logo are service marks licensed to Sotheby's International Realty Affiliates LLC and used with permission. Atlanta Fine Homes, LLC fully supports the principles of the Fair Housing Act and the Equal Opportunity Act. Each franchise is independently owned and operated. Any services or products provided by independently owned and operated franchisees are not provided by, affiliated with or related to Sotheby's International Realty Affiliates LLC nor any of its affiliated companies. All information is believed to be accurate but not warranted. Features, materials, dimensions and designs are subject to errors and omissions and may change at any time without prior notice.





Lot 2
FLOOR PLANS



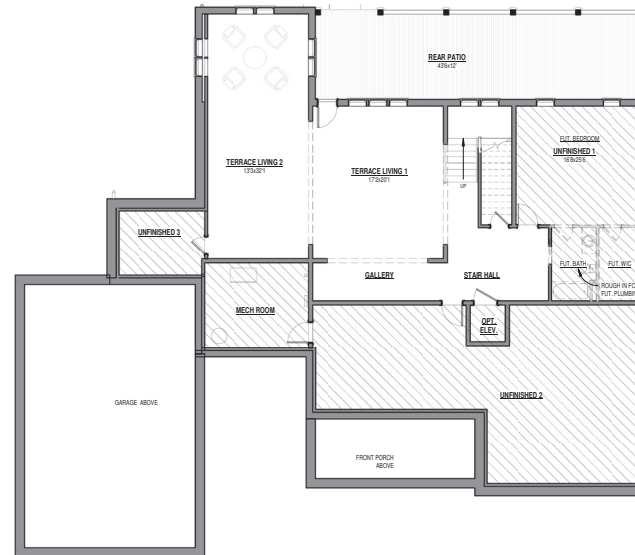
FIRST LEVEL



Lot 2
FLOOR PLANS



SECOND LEVEL



TERRACE LEVEL